

## Murder on a mountain

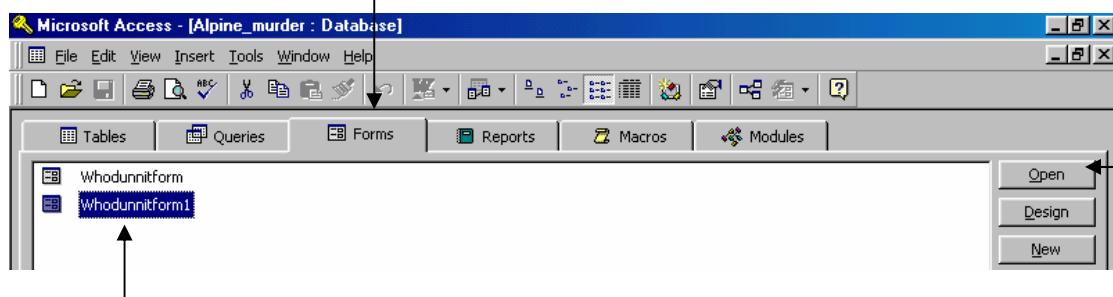
### Assignment 5

Inspector Blanc is very impressed with the form you have created for him but before he has time to use it himself the police discover that Joe Fabio has an alibi. He isn't the murderer! Further questioning reveals that some of the witness statements are unreliable. Talk in the village suggests a suicide or accident but the gunshot wound in the man's back indicates a definite murder.

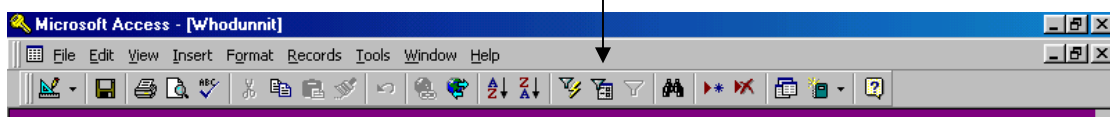
Interviewing begins for a third time. Inspector Blanc wants you to investigate the database again but using the form you have created this time.

### Using Form Filters

- Load the database. (*repeat the Form Design activity if you have forgotten to save your form - that'll teach you to be more careful!!*)
- Click on the Forms tab and open one of your forms.



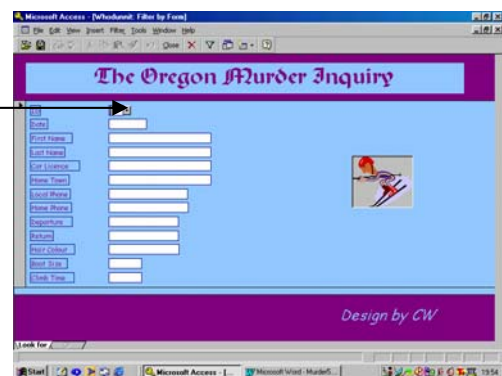
- Click on the Filter by Form button



Ready to Filter by Form

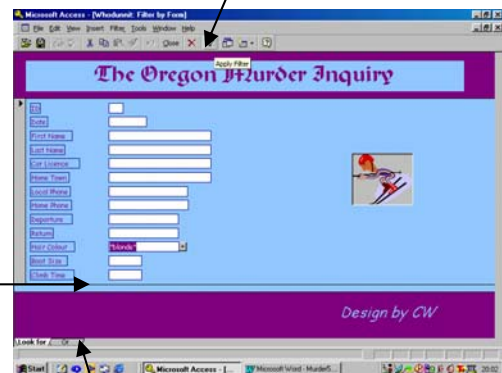
A screenshot of the 'The Oregon Murder Inquiry' form in Microsoft Access. The form displays various fields for investigation, including Name, Date, Time, Location, and Status.A screenshot of the 'The Oregon Murder Inquiry' form in Microsoft Access, showing the form after applying a filter. The form displays a list of records, indicating that the filter has been applied.

Filters are applied by clicking on the relevant field and using the drop down box to choose the field content.



Apply the filter

- Find all people with 'blonde' hair, (there should be 18!)



'Or' tab

A mistake was made on the database and some spellings of 'blonde' appear as 'blond'. You need to find all the blonde **or** blond people.

- Click on the Filter by Form button a second time.
- Click on the 'Or' tab at the bottom
- Find all the people with 'blond'
- Apply the filter. You should now find 21 records.
- Remove the filter

Find people whose names begin with R.

- Click on the Filter by Form button
- Enter **R\*** in the Last Name field.
- Apply the filter. You should find 5 records.
- Remove the filter.

Find all the people who live in Washington State (WA).

- Click on the Filter by Form button
- Enter **\*WA** in the Home Town field.
- Apply the filter. You should find 41 records.
- Remove the filter.

Find all the people with shoe size greater than 8.

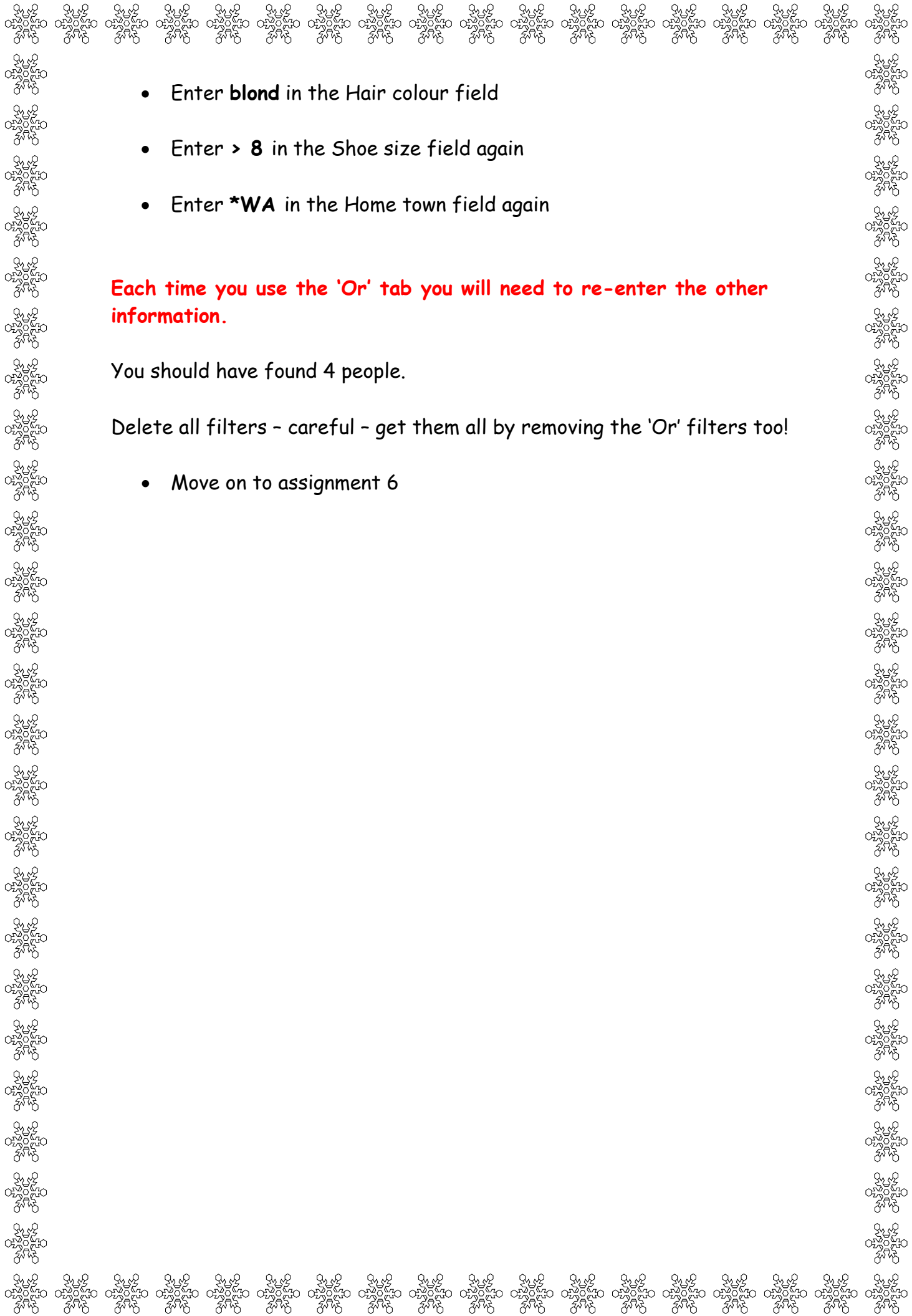
- Click on the Filter by Form button
- Enter **> 8** in the Shoe size field.
- Apply the filter. You should find 24 records.
- Remove the filter.

You can combine several searches in the different fields. Find all the people who have blonde or blond hair living in Washington state with a shoe size of bigger than 8.

- Click on the Filter by Form button
- Enter **> 8** in the Shoe size field.
- Enter **\*WA** in the Hometown field.
- Enter **blonde** in the Hair colour field
- Press the 'Or' tab

The \* is called a 'wild card' and stands for any other letters. It can be used before or after other letters which you are looking for.

You can use:  
 < less than  
 > greater than  
 <= less than or equal to  
 >= greater than or equal to  
 <> not equal to

- 
- Enter **blond** in the Hair colour field
  - Enter **> 8** in the Shoe size field again
  - Enter **\*WA** in the Home town field again

Each time you use the 'Or' tab you will need to re-enter the other information.

You should have found 4 people.

Delete all filters - careful - get them all by removing the 'Or' filters too!

- Move on to assignment 6